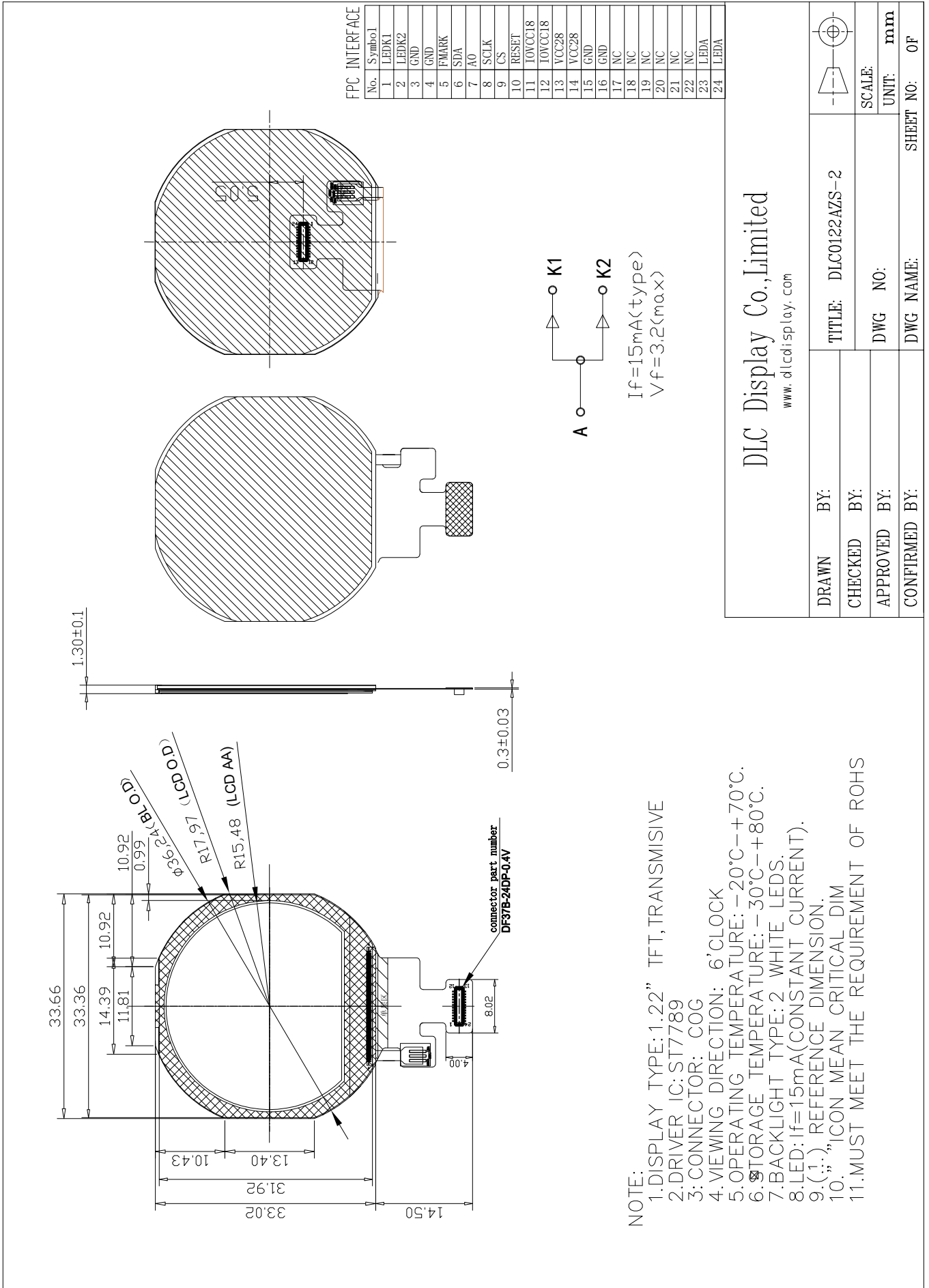


Outline Drawing



DLC Display Co., Limited

www.dlccisplay.com

DRAWN BY:	TITLE: DLC0122AZS-2	SCALE:	mm
CHECKED BY:	DWG NO:	UNIT:	mm
APPROVED BY:	DWG NAME:	SHEET NO:	OF

- NOTE:
- 1.DISPLAY TYPE: 1.22" TFT, TRANSMISIVE
  - 2.DRIVER IC: ST7789
  - 3.CONNECTOR: COG
  - 4.VIEWING DIRECTION: 6'CLOCK
  - 5.OPERATING TEMPERATURE: -20°C--+70°C.
  - 6.STORAGE TEMPERATURE: -30°C--+80°C.
  - 7.BACKLIGHT TYPE: 2 WHITE LEDS.
  - 8.LED: If=15mA(CONSTANT CURRENT).
  - 9.(.) REFERENCE DIMENSION.
  - 10." " ICON MEAN CRITICAL DIM
  - 11.MUST MEET THE REQUIREMENT OF ROHS