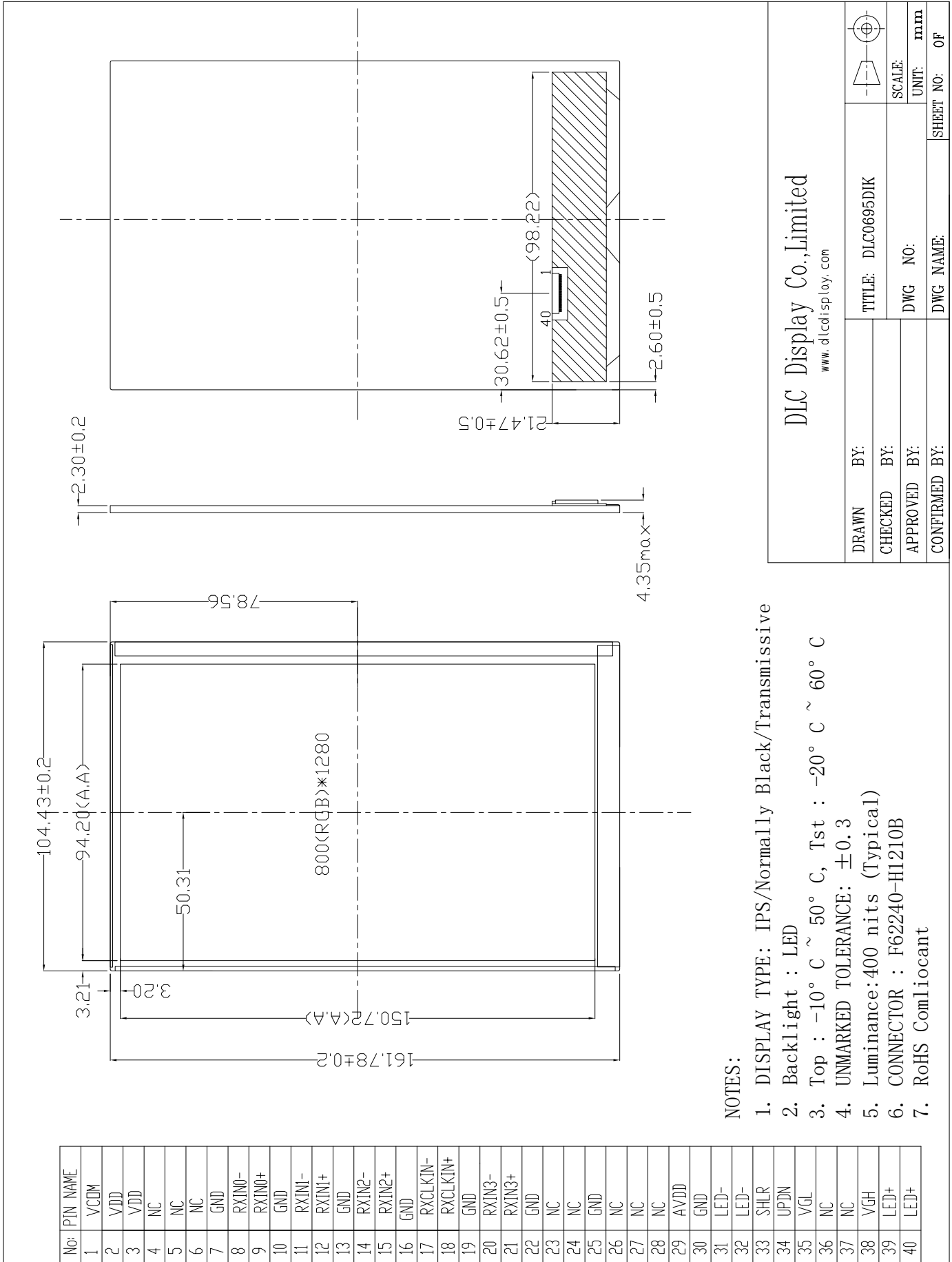


Outline Drawing



NOTES:

1. DISPLAY TYPE: IPS/Normally Black/Transmissive
2. Backlight : LED
3. Top : -10° C ~ 50° C, Tst : -20° C ~ 60° C
4. UNMARKED TOLERANCE: ±0.3
5. Luminance: 400 nits (Typical)
6. CONNECTOR : F62240-H1210B
7. RoHS Comliocant

DLC Display Co., Limited

www.dlcdisplay.com

DRAWN BY:	TITLE: DLC0695DIK	
CHECKED BY:	SCALE:	
APPROVED BY:	DWG NO:	UNIT: mm
CONFIRMED BY:	DWG NAME:	SHEET NO: OF