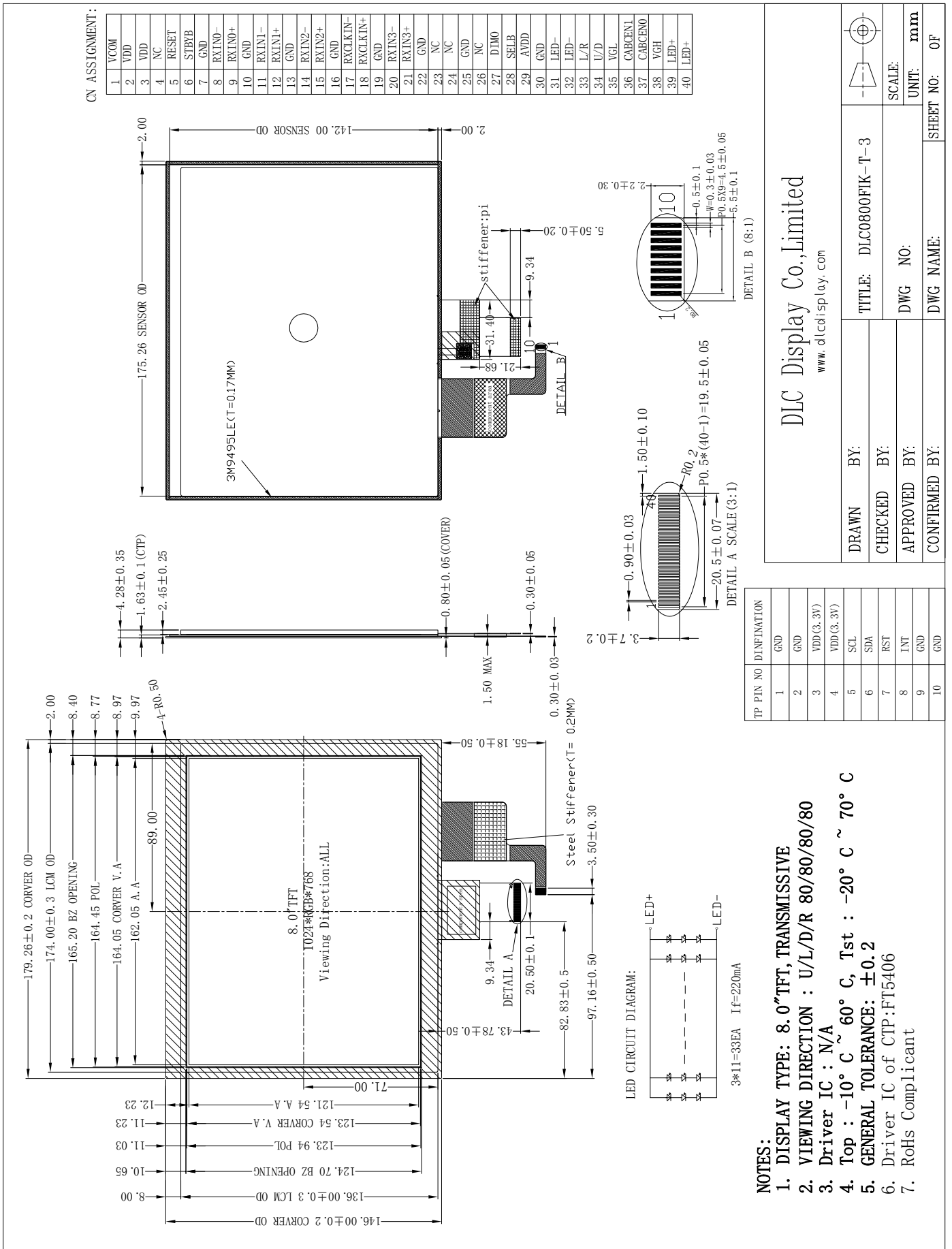


Outline Drawing



CN ASSIGNMENT:

1	VCOM
2	VDD
3	VDD
4	NC
5	RESET
6	STBYB
7	GND
8	RX1M0-
9	RX1M0+
10	GND
11	RX1N1-
12	RX1N1+
13	GND
14	RX1N2-
15	RX1N2+
16	GND
17	RX1K1N-
18	RX1K1N+
19	GND
20	RX1N3-
21	RX1N3+
22	GND
23	NC
24	NC
25	GND
26	NC
27	DIM0
28	SELB
29	AVDD
30	GND
31	LED-
32	LED-
33	L/R
34	U/D
35	VGL
36	CABCEN1
37	CABCEN0
38	VGH
39	LED+
40	LED+

TP PIN NO	DEFINITION
1	GND
2	GND
3	VDD(G,3V)
4	VDD(G,3V)
5	SCL
6	SDA
7	RST
8	INT
9	GND
10	GND

DRAWN BY:	BY:	TITLE:	DLC0800FIK-T-3
CHECKED BY:	BY:	DWG NO:	
APPROVED BY:	BY:	DWG NAME:	
CONFIRMED BY:	BY:	SHEET NO:	OF

LED CIRCUIT DIAGRAM:

3\*11=33EA If=220mA

LED+

LED-

NOTES:

1. DISPLAY TYPE: 8.0" TFT, TRANSMISSIVE
2. VIEWING DIRECTION : U/L/D/R 80/80/80/80
3. Driver IC : N/A
4. Top : -10° C ~ 60° C, Tst : -20° C ~ 70° C
5. GENERAL TOLERANCE: ±0.2
6. Driver IC of CTP: FT5406
7. RoHS Compliant

DLC Display Co., Limited  
www.dlccdisplay.com